

Land Title Act 1994: Land Act 1994
Form 21 Version 2

SURVEY PLAN

Sheet 1 of 1

REFERENCE MARKS

STN	TO	ORIGIN	BEARING	DIST
1	OScrew in Kb	6/RP836097	284°25'	3.6
1	OScrew in Kb	4/RP836097	284°25'	16.35
2	Screw in Kb		41°17'	4.87
3	ONail in Kb	24/SPI26595	5°56'30"	3.96
5	ONail in Kb	26/SPI26595	2°16'	3.84
6	ONail in Kb	16/SPI26595	72°40'30"	3.775
6	Ramsset in Kb		60°40'40"	20.29
7	Screw in Kb		182°40'30"	40.88
8	OIP	12/RP836097	185°55'50"	1.0
8	Bolt in Kb		96°00'30"	16.52
9	OIP	16/RP800518	184°58'	0.97
10	Screw in Conc		285°53'40"	2.095
10	S.Pkt		76°51'	35.195
11	OIP gone	22/RP836097	192°59'	1.0
11	S.Pkt		172°26'	9.46
11	Screw in Conc		89°55'50"	12.79
12	OIP	9/RP836097	at Station	
12	OScrew	9/RP836097	269°55'50"	3.7
12	Terrier in Telstra PIR fd		95°17'10"	32.13
13	OIP	33/SPI26595	185°56'30"	2.0

N & C
New Conn

N & C

PERMANENT MARKS

PK	ORIGIN	BEARING	DIST	NO	TYPE
2a-OPM	SPI26595	at Station		139116	Brass Plq
6a-OPM	SPI26595	at Station		139115	Brass Plq
9a-OPM	RP911425	at Station		84948	S.Pkt

New Conn
New Conn

TRAVERSES ETC

LINE	BEARING	DISTANCE
2-2a	12°05'30"	18.39
6-6a	39°42'50"	29.85
8-8a	5°57'15"	6.0
8-8b	269°55'50"	6.0
8-9	89°55'50"	20.217
9-9a	345°59'	9.753
9-9b	89°55'50"	6.0
12-12a	89°55'50"	6.0

N & C

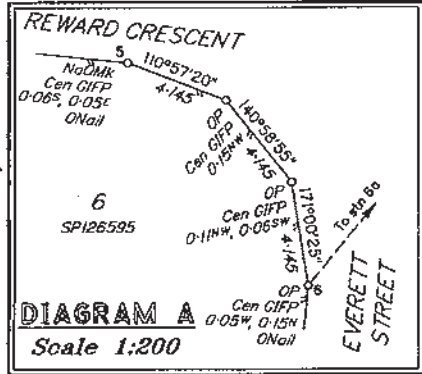
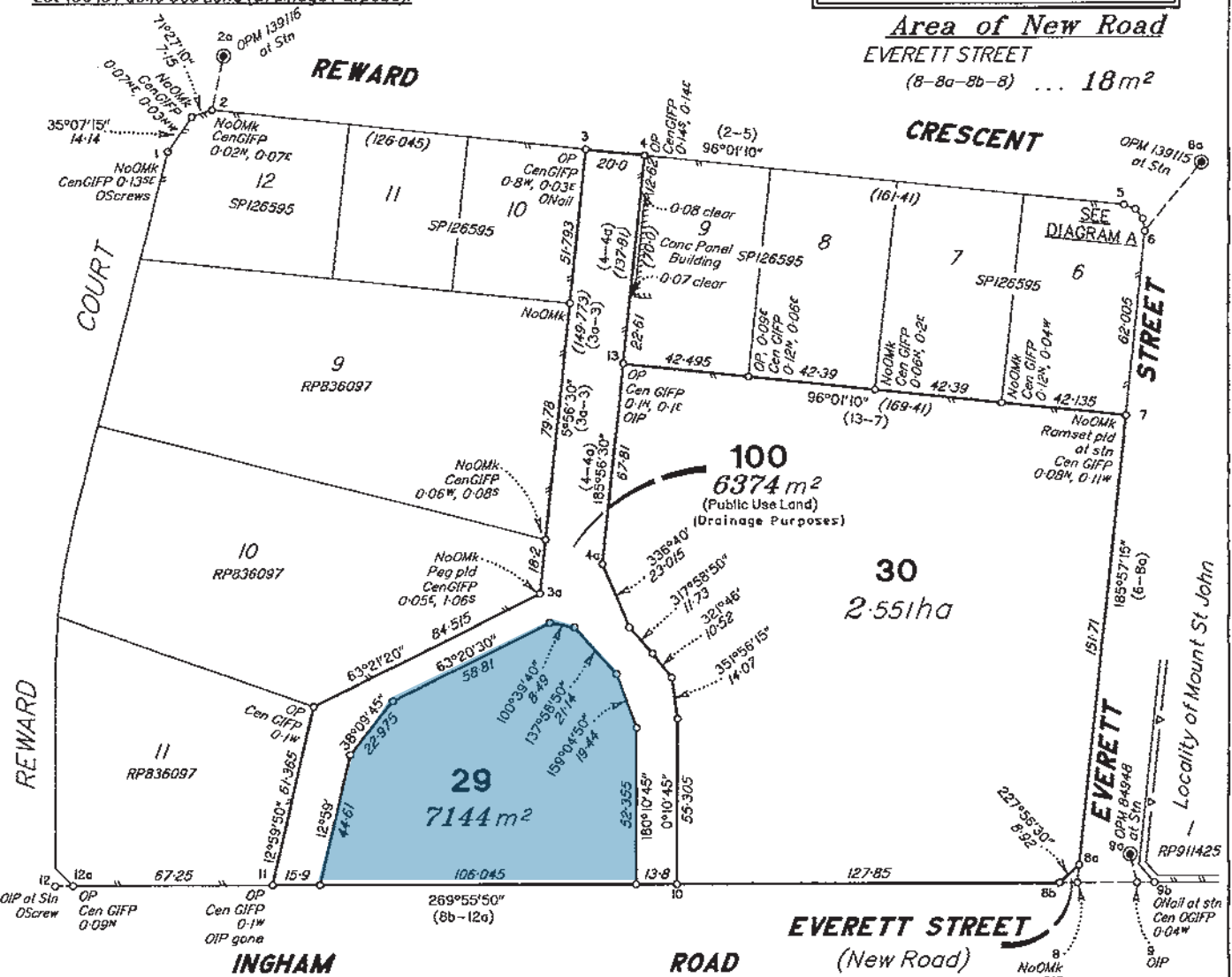


DIAGRAM A
Scale 1:200

Area of New Road
EVERETT STREET
(8-8a-8b-8) ... 18m²



BRAZIER MOTTI PTY LTD (ACN 066 411 041) hereby certify that the land comprised in this plan was surveyed by the corporation, by Stephen JESS, Surveying Graduate, for whose work the corporation accepts responsibility, under the supervision of Christopher Francis McGINN, Cadastral Surveyor, and that the plan is accurate, that the said survey was performed in accordance with the Survey and Mapping Infrastructure Act 2003 and Surveyors Act 2003 and associated Regulations and Standards and that the said survey was completed on 20th January, 2009.



Director
Date 5/5/09

Metres 0 75m 150m 225m
50mm 100mm 150mm State copyright reserved.

Plan of Lots 29, 30 and 100

Cancelling Lot 16 on SPI26595

PARISH: COONAMBELAH COUNTY: Elphinstone
Meridian: MGA zone 55 vide SPI26595 F/N's: No

Scale: 1:1500
Format: STANDARD
SP222397
Plan Status:

27297/004 STJ